

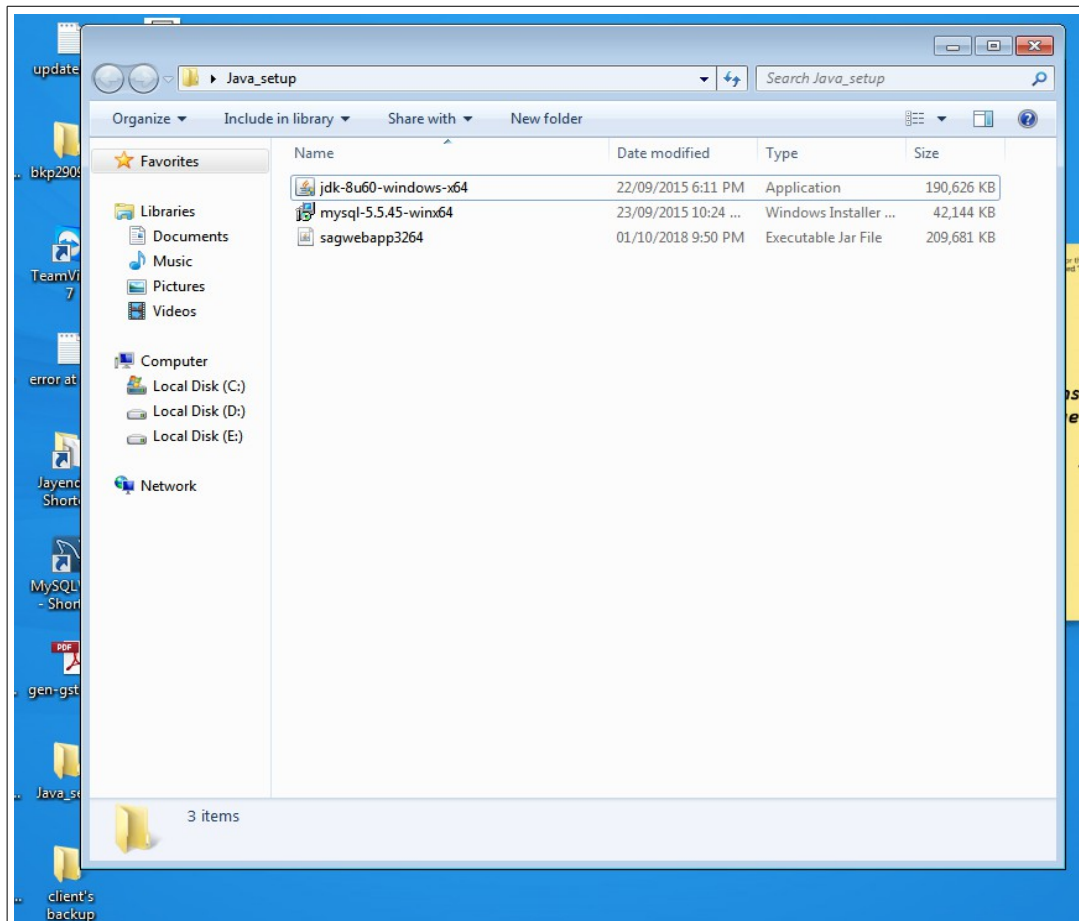


GEN GST SOFTWARE (Ver 2.0)

INSTALLATION GUIDE

STEP 1

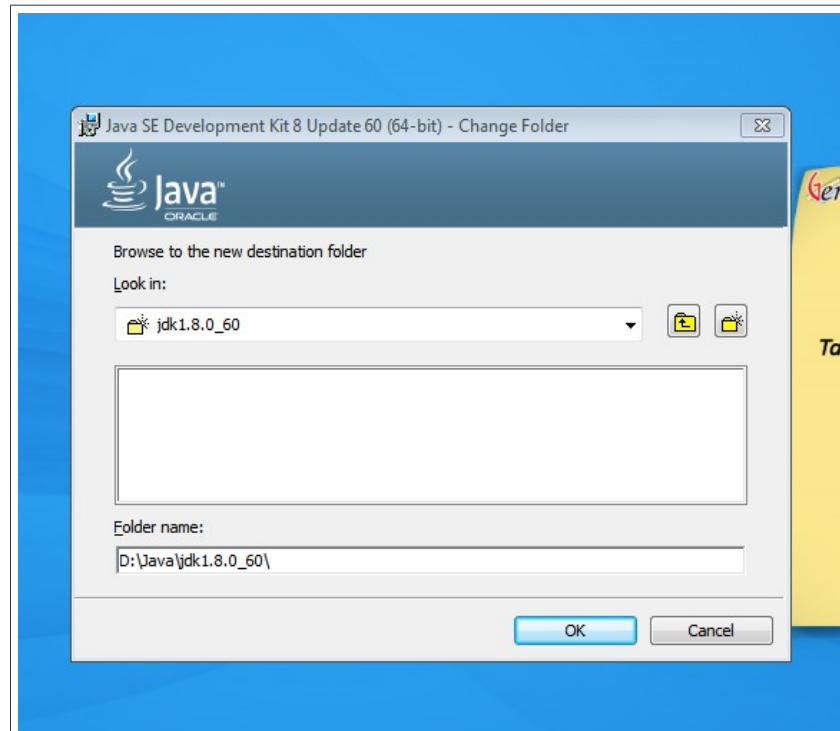
- You will get the Gen GST Software Setup on your mail.
- Extract the file you downloaded and you will get a folder containing the files given below. (SCRN 1)
- At first you need to install Java Development Kit “jdk-8u73-windows-i586”.
- Go through basic installation steps.



SCRN 1: Extracted Files

STEP 2

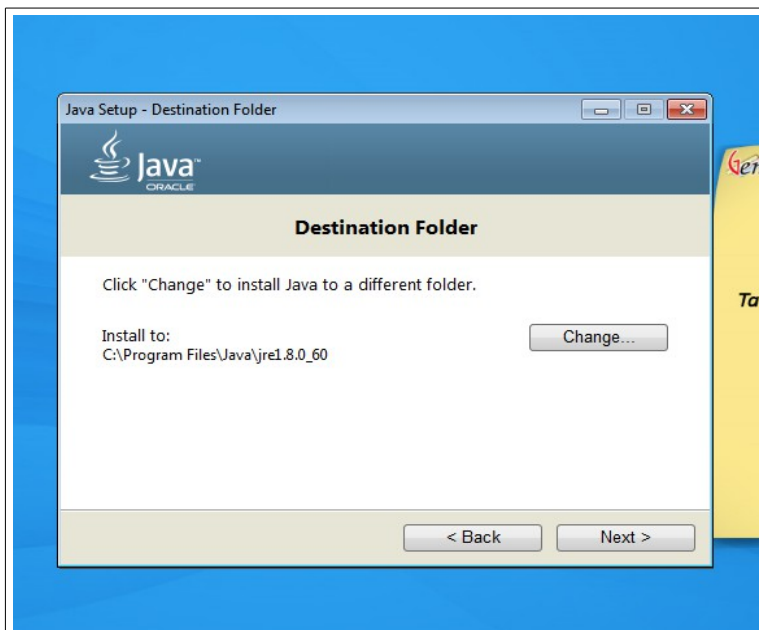
- In 2nd step you need to change the path for installation for the JDK file as this is necessary for the windows permission.
- Change the installation path to any other drive than Drive “C”, for ex. Drive “D” or “E”. (SCRN 2)
- Click on 'Ok' and follow simple installation steps.



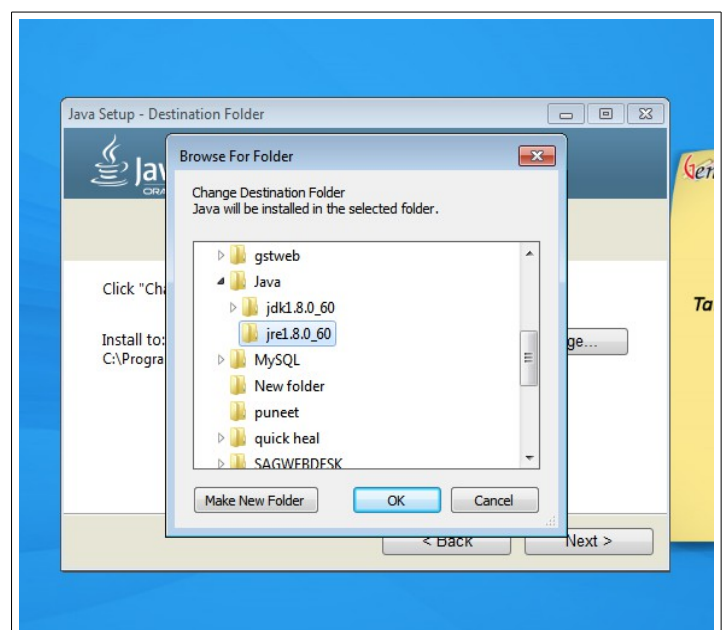
SCRN 2: JDK installation path

STEP 3

- In 3rd step you need to change the path for JAR installation. (SCRN 3)
- You need to choose the same path you chose for JDK installation.
- Create a new folder named same as 'jdk' folder. All you need to do is replace the 'jdk' with 'jre'. For ex. If jdk folder is named as “jdk1.8.0_60” you will create a new folder named “jre1.8.0_60”. (SCRN 4)
- Now Click on 'Ok' and follow the installation steps.
- After installation is complete click on “Close” button.



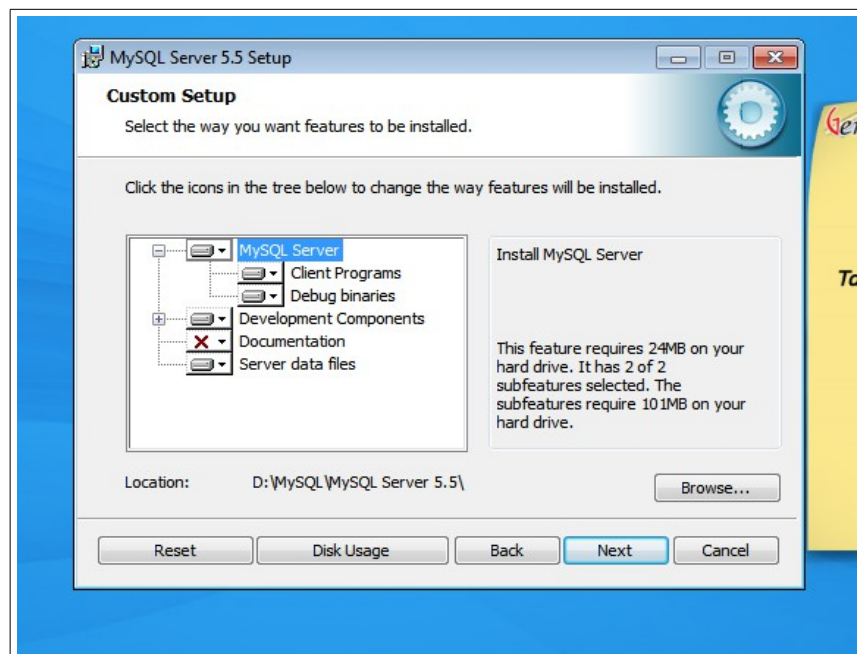
SCRN 3: JAR installation path



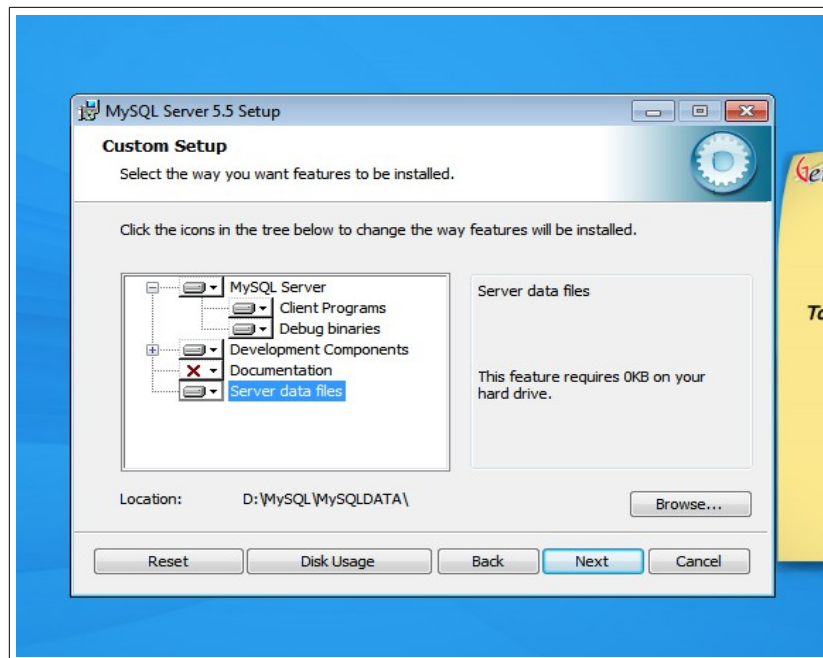
SCRN 4: JRE folder creation

STEP 4

- Now we will install MySQL for software database, For that go to the extracted folder and install file named with “mysql-5.5”.
- In “setup type” screen of the installation you need to choose “Custom Option” and change the path for MySQL Server to the same drive where you installed the JDK files. (SCRN 5)
- For “Server Data Files” option you also need to change path, Create a new folder in the MySQL folder named as “MySQLDATA” and choose it as a path for “Server Data Files”. (SCRN 6).
- Now click on 'Next' and proceed to installation. While clicking on “Finish” Don't forget to tick the check box saying 'Launch the MySQL Instance Configuration Wizard'.



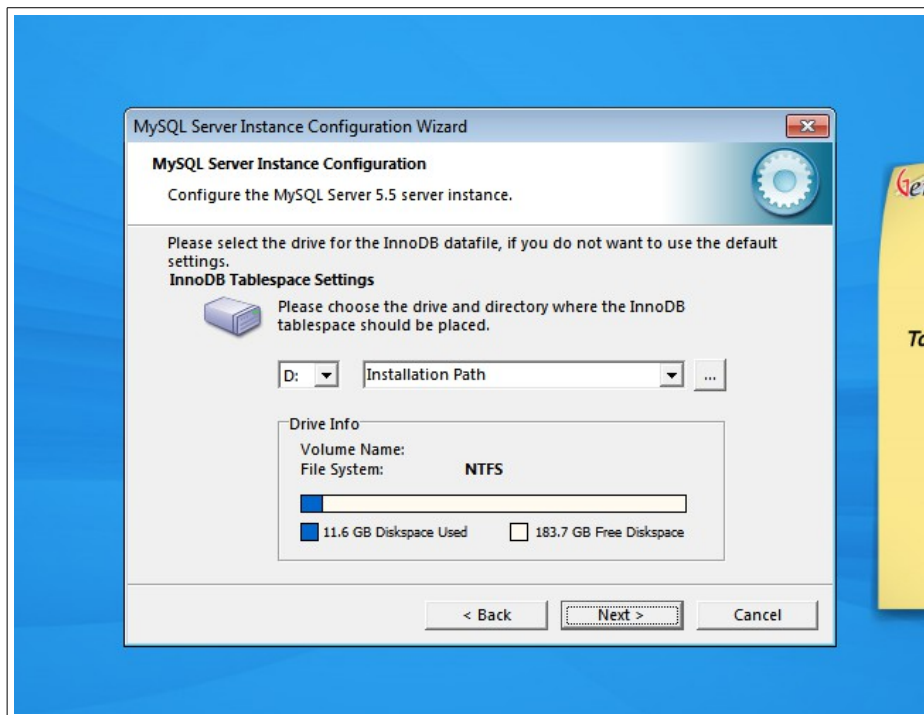
SCRN 5: MySQL Server Path



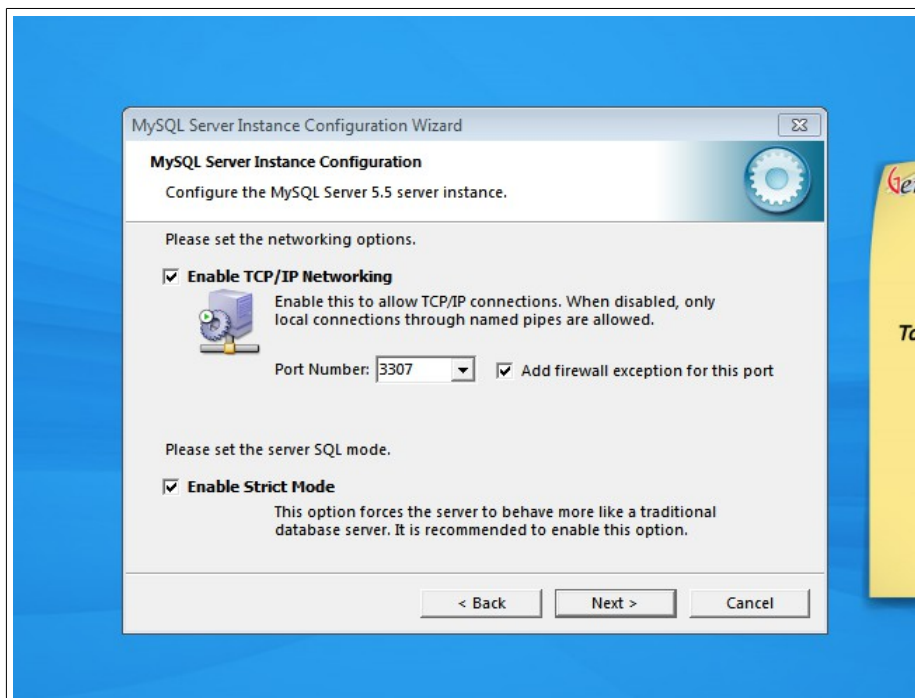
SCRN 6: Server data files Path

STEP 5

- Now we will continue the MySQL Instance Configuration Wizard. At first you have to select “Detailed Configurations”. After that click on next and select “Developer Machine” next select “Multifunctional Database” and click on Next. (SCRN 7)
- Now select “Decision Support (DSS)/OLAP” and click on next. In the next screen you have to change the port number, By default it will be “3306” you have to change it to “3307” and tick the box next to it saying 'Add Firewall Exception for this Post'. (SCRN 8)



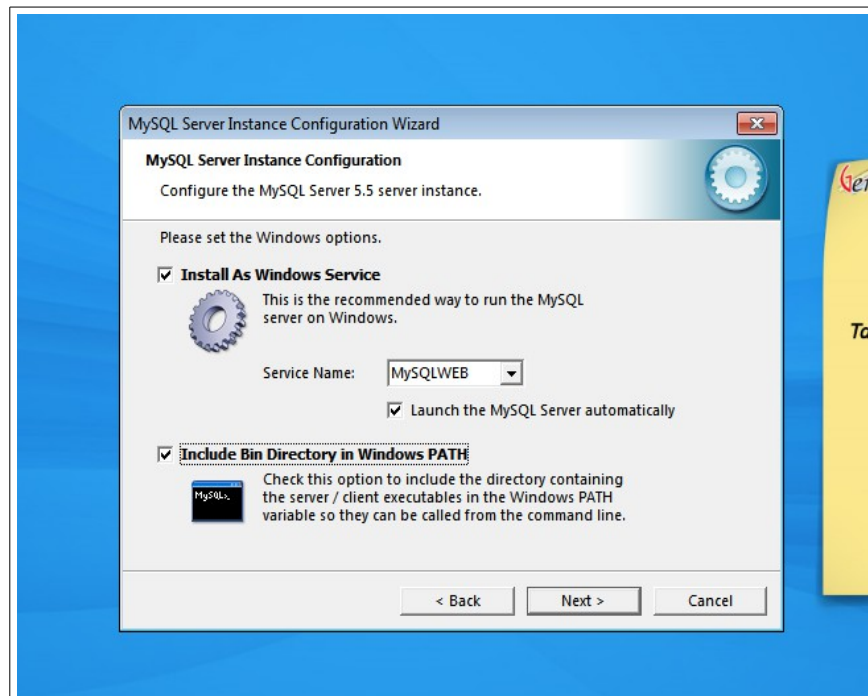
SCRN 7: MySQL Server Setup Process



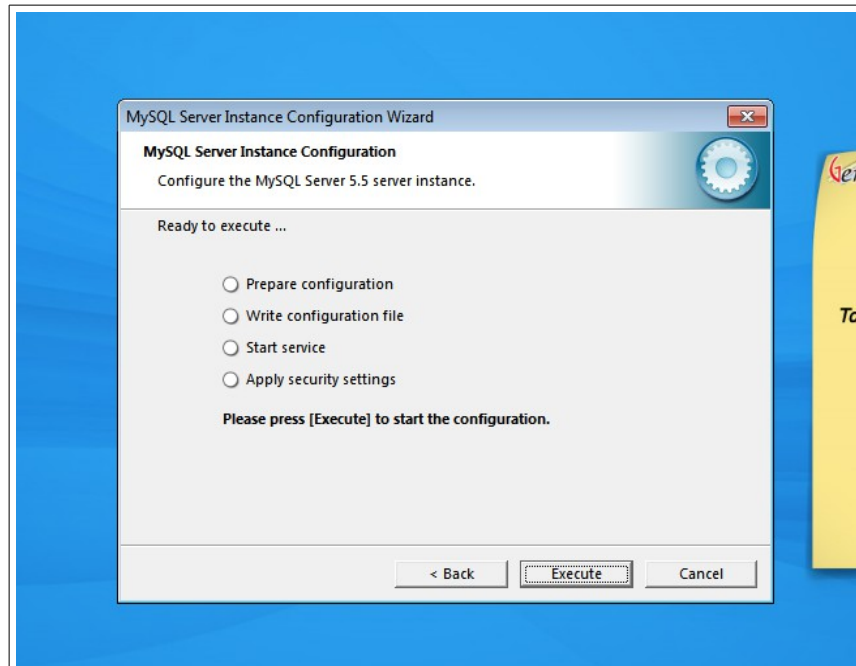
SCRN 8: MySQL Server Setup Process

STEP 6

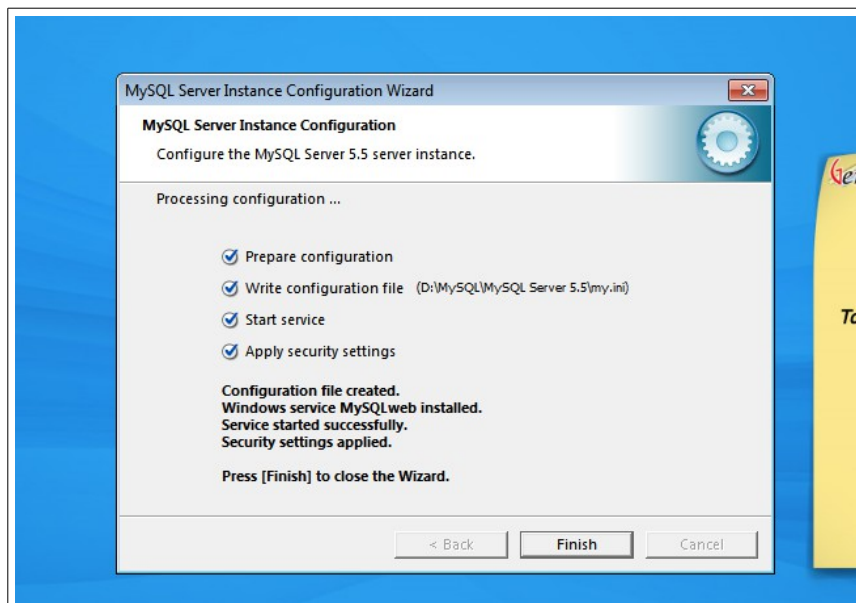
- Proceed with installation and leave all check boxes marked as default.
- In MySQL change the MySQL Service Name from the default name “MySQL” to “MYSQLWEB” as shown in Screenshot. (SCRN 9)
- Tick the option “Include Bin Directory in Windows PATH” and click on 'Next'.
- In the next window enter the password as “**root**” and tick the box which says “Enable root access”.
- Now click on 'Next' and in the next window click on 'Execute' and wait for it to finish. (SCRN 10,11)



SCRN 9: MySQL Service Name



SCRN 10: Execute MySQL Service Setup



SCRN 11: MySQL Service Setup Finish

STEP 7

- Now again head to Setup Folder and run “sagwebapp”. It should show a message “Service Started Successfully”. When you click on 'Ok' it will open a new window.
- Next click on “Install” button. It will open a new window, which shows a path of software installation from your PC. You need to change this path. You will choose the path of the same drive where you have installed the Java & MySQL, There you have to create a folder with the name “SAGWEBDESK”. (SCRN 12)
- Next click on “Save” and Install it.



SCRN 12: Project Location path

STEP 8

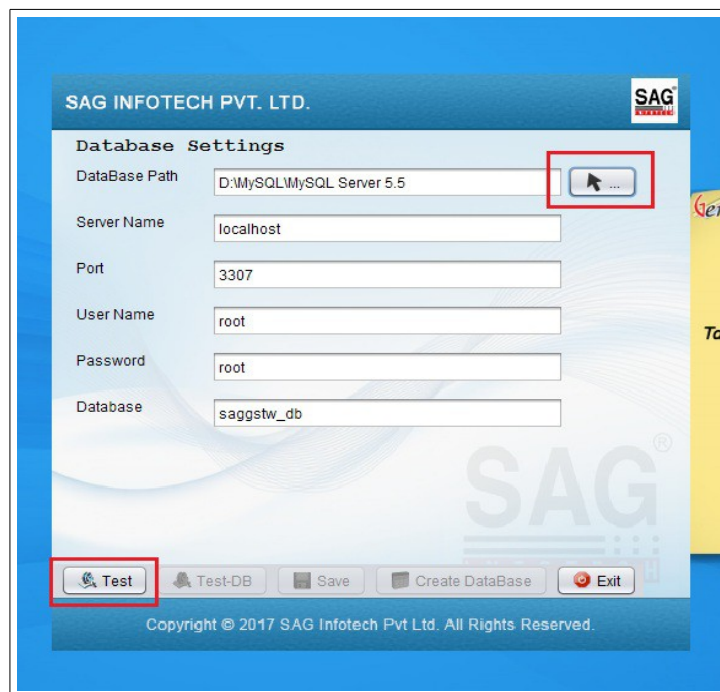
- In next step it asks a file for “Java-Home”, Here you must choose the path of JDK (Same folder where you installed the jdk file in the Java Folder). When you select the folder it should be look like “D:\Java\jdk1.8.0_60” depending on the drive you chose to install Java. You can also validate it by clicking on “Test” button. Click on Save & then Next. (SCRN 13)
- Now it will install the project, After completion click on Finish.



SCRN 13: Java Home Path

STEP 9

- In next window it will ask for Database Setting.
- First select path for MySQL, For which you have to choose the MySQL folder in your drive. For ex. If you chose the drive 'E' for installation then your path will be “E:\MySQL\MySQL Server 5.5”. (SCRN 14)
- You can test the Database configuration by clicking on “Test”. (SCRN 14)
- Now click on “Test-DB”. It will show a message, “Database not exist” as your Database is not created yet (SCRN 15). Now you have to create a Database, For that click on “Create Database” option, It will show a message “Database is restoring”. (SCRN 16) and after that click on “Test-DB” now it will show “Database Tested Successfully” (SCRN 17).
- The Setup is complete, now close all the windows.



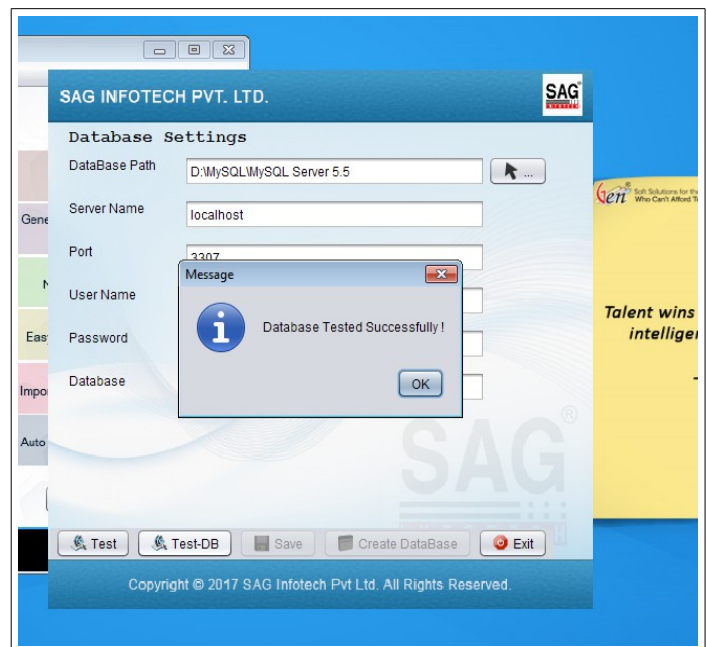
SCRN 14: Database Settings



SCRN 15: Database Test



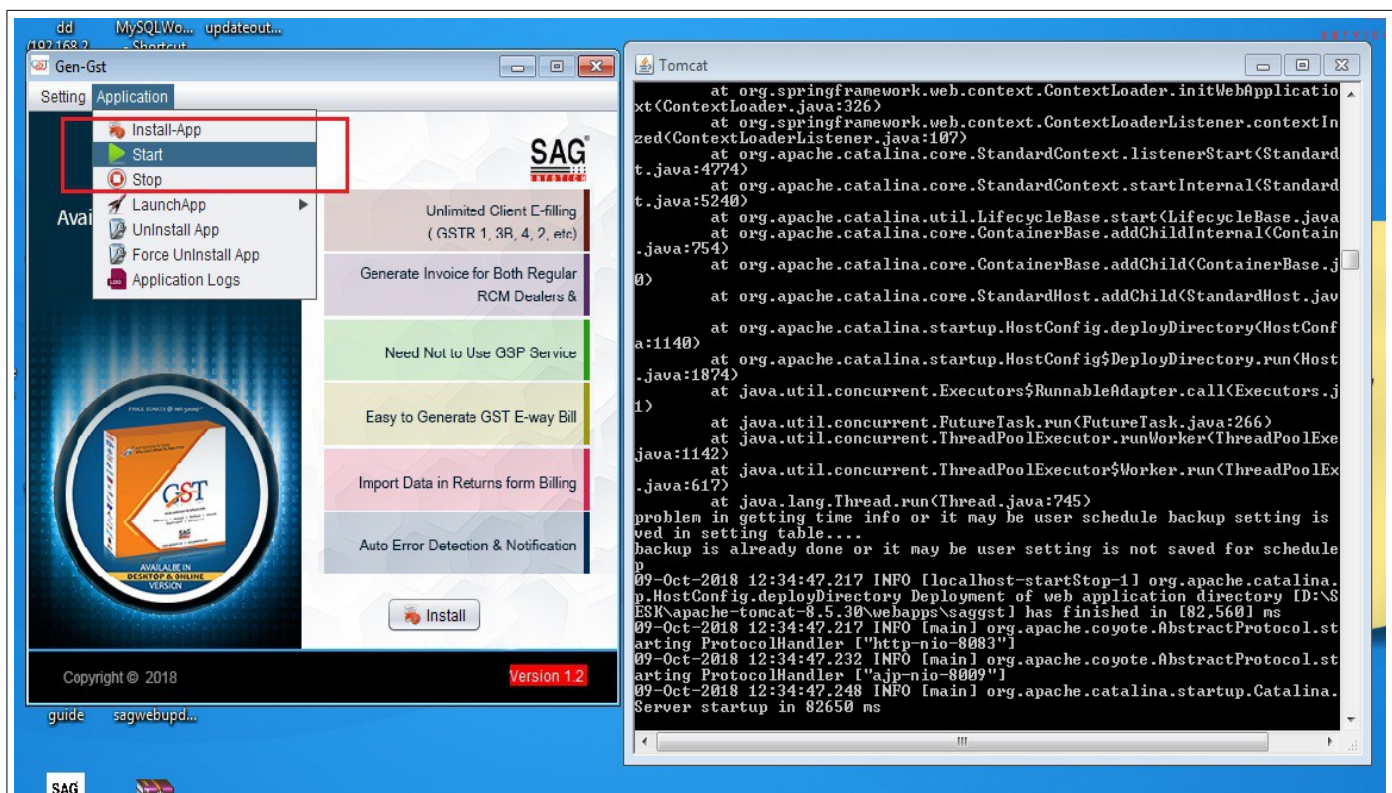
SCRN 16: Database Creation



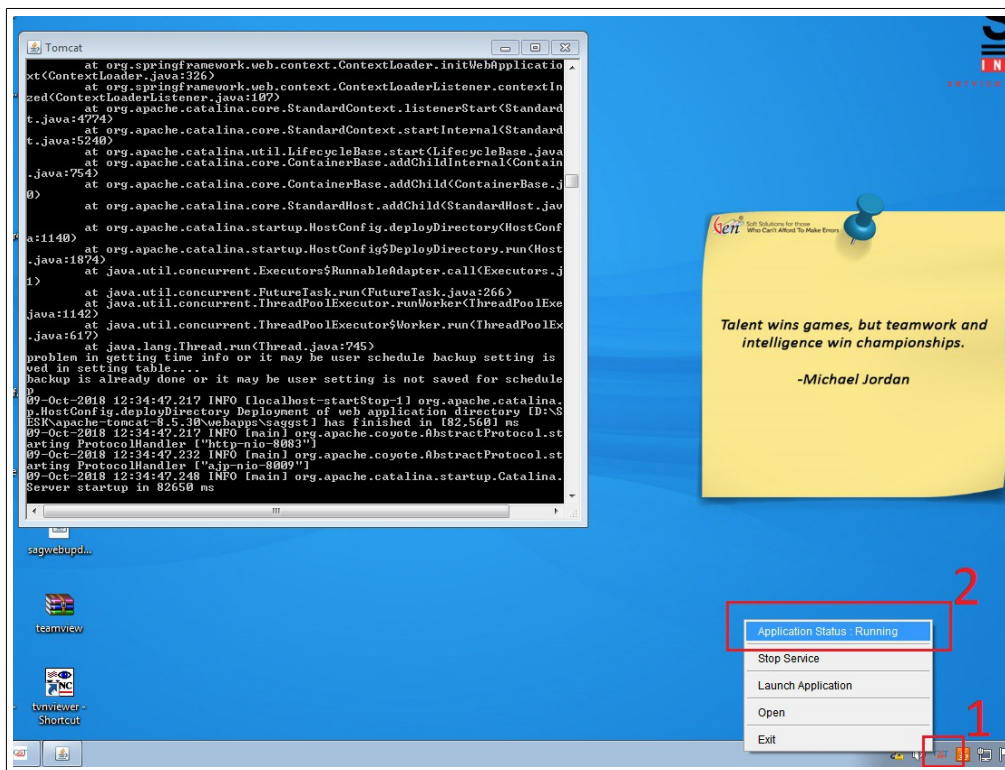
SCRN 17: Database Test

STEP 10

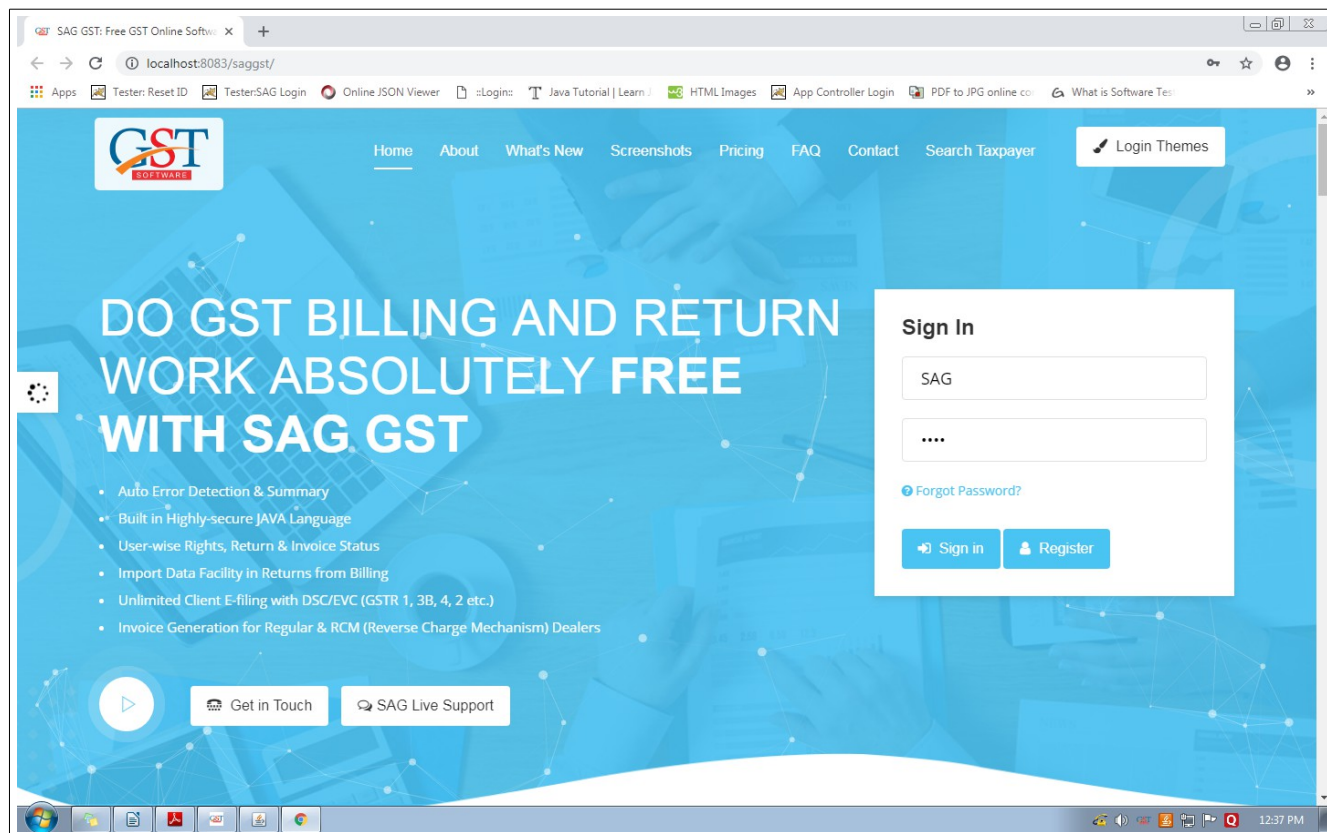
- To run GST Software go to Gen-GST > Application > Start. It will open a window named Tomcat. (SCRN 18)
- Now go check Gen GST Application in the taskbar and **right click on Gen GST Software icon**¹. If it shows **application status running**² in your window, (SCRN 19) you need to click on 'GenWebGST' option on Desktop.
- It will start the GEN GST Software in your system. (SCRN 20)
- By default Username is “sag” and Password is “1234”.



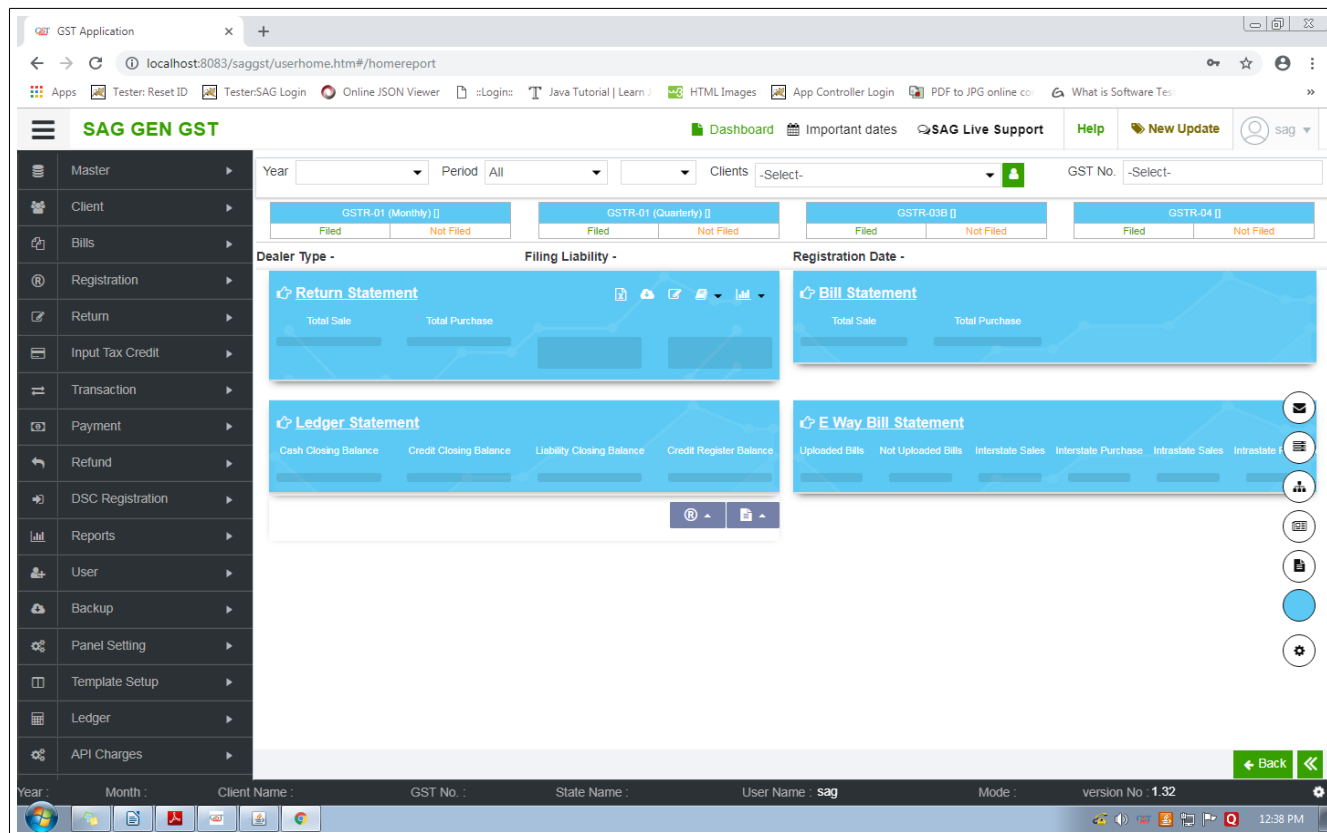
SCRN 18: Starting Gen GST software



SCRN 19: Starting Gen GST software



SCRN 20: Gen GST software Log-in Screen



The screenshot displays the 'SAG GEN GST' software interface. At the top, there is a navigation bar with the application name and several utility links. A sidebar on the left provides access to various system modules. The main content area is divided into sections for filtering data and displaying key reports. The bottom of the screen features a status bar with user and system information.

SCRN 21: Gen GST Software Start Screen